

**IMMUNOHISTOCHEMISTRY  
ANATOMICAL PATHOLOGY**

**2008/2009 CATALOG**



**Histo-Line  
Laboratories**

**Innovative life science solutions**

## Table of Contents

<b>Antibodies</b>	<b>2</b>
<b>Ancillaries</b>	<b>19</b>
<b>Antibody Diluents</b>	<b>19</b>
<b>Buffers</b>	<b>19</b>
<b>Digestion Enzymes and Enhancers</b>	<b>20</b>
<b>Hydrophobic Pens</b>	<b>21</b>
<b>Blocking Reagents</b>	<b>21</b>
<b>Mounting Media</b>	<b>22</b>
<b>Detection Kits and Chromogens</b>	<b>23</b>

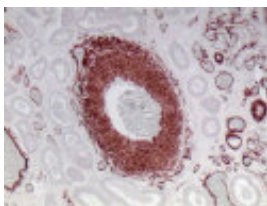
## Primary Antibodies

### Actin (Alpha-Smooth Muscle)

Clone	Host	Quantity	Cat #	Applications
1A4	Mouse	1 ml Concentrate	HL180106	P F
1A4	Mouse	2 ml Ready-to-use	HLA20002	P F
1A4	Mouse	6 ml Ready-to-use	HLA00002	P F

### Actin (Muscle-Specific)

Clone	Host	Quantity	Cat #	Applications
HHF35	Mouse	1 ml Concentrate	HLDM002	P F
HHF35	Mouse	2 ml Ready-to-use	HLA20001	P F
HHF35	Mouse	6 ml Ready-to-use	HLA00001	P F



### Actin (Pan)

Clone	Host	Quantity	Cat #	Applications
1A4+5C5	Mouse	1 ml Concentrate	HLDM235	P F
1A4+5C5.F8.C7	Mouse	2 ml Ready-to-use	HLA20067	P F
1A4+5C5.F8.C7	Mouse	6 ml Ready-to-use	HLA00067	P F

### Alpha-Antichymotrypsin

Clone	Host	Quantity	Cat #	Applications
N/A	Rabbit	1 ml Concentrate	HLDR047	P F
N/A	Rabbit	2 ml Ready-to-use	HLA20073	P F
N/A	Rabbit	6 ml Ready-to-use	HLA00073	P F

### Alpha-Antitrypsin

Clone	Host	Quantity	Cat #	Applications
N/A	Rabbit	1 ml Concentrate	HL180002	P F
N/A	Rabbit	2 ml Ready-to-use	HLA20074	P F
N/A	Rabbit	6 ml Ready-to-use	HLA00074	P F

### Alpha-Fetoprotein (AFP)

Clone	Host	Quantity	Cat #	Applications
N/A	Rabbit	1 ml Concentrate	HL180005	P F
N/A	Rabbit	2 ml Ready-to-use	HLA20058	P F
N/A	Rabbit	6 ml Ready-to-use	HLA00058	P F

### B Lymphocyte Antigen

Clone	Host	Quantity	Cat #	Applications
A27-42	Mouse	2 ml Ready-to-use	HLA20005	P F
A27-42	Mouse	6 ml Ready-to-use	HLA00005	P F

P=Formalin-fixed, paraffin-embedded  
F= Frozen sections

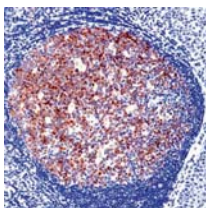
## Primary Antibodies

### Bcl-2-oncoprotein

Clone	Host	Quantity	Cat #	Applications
Bcl-2-100	Mouse	1 ml Concentrate	HL180193	P F
124	Mouse	2 ml Ready-to-use	HLA20004	P F
124	Mouse	6 ml Ready-to-use	HLA00004	P F

### Bcl-6

Clone	Host	Quantity	Cat #	Applications
N/A	Rabbit	2 ml Ready-to-use	HLA20040	P F
N/A	Rabbit	6 ml Ready-to-use	HLA00040	P F
PG-B6P	Mouse	1 ml Concentrate	HLDM396	P F
PG-B6P	Mouse	2 ml Ready-to-use	HLA20077	P F
PG-B6P	Mouse	6 ml Ready-to-use	HLA00077	P F



### Bcl-10

Clone	Host	Quantity	Cat #	Applications
151	Mouse	1 ml Concentrate	HL180275	P F
151	Mouse	6 ml Ready-to-use	HL081275	P F

### CA125

Clone	Host	Quantity	Cat #	Applications
OC 125	Mouse	0.5 ml Concentrate	HL187242	P F
Ov185:1	Mouse	2 ml Ready-to-use	HLA20084	P F
Ov185:1	Mouse	6 ml Ready-to-use	HLA00084	P F

### CA 15-3

Clone	Host	Quantity	Cat #	Applications
TA888	Mouse	0.5 ml Concentrate	HL187265	P F
TA888	Mouse	6 ml Ready-to-use	HL081265	P F

### CA 19-9

Clone	Host	Quantity	Cat #	Applications
DF3	Mouse	0.5 ml Concentrate	HL187239	P F
N/A	Mouse	2 ml Ready-to-use	HLA20078	P F
N/A	Mouse	6 ml Ready-to-use	HLA00078	P F

### E-Cadherin

Clone	Host	Quantity	Cat #	Applications
4A2C7	Mouse	1 ml Concentrate	HL180223	P F
4A2C7	Mouse	6 ml Ready-to-use	HL081223	P F

P=Formalin-fixed, paraffin-embedded  
F= Frozen sections

## Primary Antibodies

### Calcitonin

Clone	Host	Quantity	Cat #	Applications
N/A	Rabbit	1 ml Concentrate	HL180012	P F
N/A	Rabbit	2 ml Ready-to-use	HLA20080	P F
N/A	Rabbit	6 ml Ready-to-use	HLA00080	P F

### Calretinin

Clone	Host	Quantity	Cat #	Applications
N/A	Rabbit	1 ml Concentrate	HL180211	P F
N/A	Rabbit	6 ml Ready-to-use	HL081211	P F

### Carcinoembryonic Antigen (CEA)

Clone	Host	Quantity	Cat #	Applications
N/A	Rabbit	1 ml Concentrate	HL180058	P F
CB30	Mouse	2 ml Ready-to-use	HLA20006	P F
CB30	Mouse	6 ml Ready-to-use	HLA00006	P F

### β-Catenin

Clone	Host	Quantity	Cat #	Applications
CAT-5H10	Mouse	1 ml Concentrate	HL180226	P F

### Cathepsin D

Clone	Host	Quantity	Cat #	Applications
N/A	Rabbit	2 ml Ready-to-use	HLA20032	P F
N/A	Rabbit	6 ml Ready-to-use	HLA00032	P F
C5	Mouse	2 ml Ready-to-use	HLA20046	P F
C5	Mouse	6 ml Ready-to-use	HLA00046	P F

### CD10, CALLA (Neutral Endopeptidase)

Clone	Host	Quantity	Cat #	Applications
56C6	Mouse	0.2 ml Concentrate	HL182287	P F
56C6	Mouse	2 ml Ready-to-use	HLA20091	P F
56C6	Mouse	6 ml Ready-to-use	HLA00091	P F

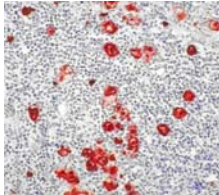
### CD14

Clone	Host	Quantity	Cat #	Applications
RPA-M1	Mouse	1 ml Concentrate	HL180121	F P

## Primary Antibodies

### CD15 Lewis (Reed-Sternberg Cell Marker)

Clone	Host	Quantity	Cat #	Applications
My1	Mouse	1 ml Concentrate	HL180122	F P
FR4A5	Mouse	2 ml Ready-to-use	HLA20085	F
FR4A5	Mouse	6 ml Ready-to-use	HLA00085	F



### CD20, B-Cell

Clone	Host	Quantity	Cat #	Applications
L26	Mouse	1 ml Concentrate	HL180088	P F
L26	Mouse	2 ml Ready-to-use	HLA20003	P F
L26	Mouse	6 ml Ready-to-use	HLA00003	P F

### CD23, B-Cell

Clone	Host	Quantity	Cat #	Applications
1B12	Mouse	1 ml Concentrate	HLDM294	P F
MHM6	Mouse	2 ml Ready-to-use	HLA20081	P F
MHM6	Mouse	6 ml Ready-to-use	HLA00081	P F

### CD3, T-Cell

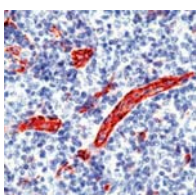
Clone	Host	Quantity	Cat #	Applications
N/A	Rabbit	2 ml Ready-to-use	HLA20030	P F
N/A	Rabbit	6 ml Ready-to-use	HLA00030	P F
SP7	Rabbit	0.5 ml Concentrate	HLRM05	P F

### CD30, Ki-1 Antigen

Clone	Host	Quantity	Cat #	Applications
Ber-H2	Mouse	1 ml Concentrate	HL180155	P F
Ber-H2	Mouse	2 ml Ready-to-use	HLA20016	P F
Ber-H2	Mouse	6 ml Ready-to-use	HLA00016	P F

### CD31, Endothelial Cell

Clone	Host	Quantity	Cat #	Applications
JC/70A	Mouse	1 ml Concentrate	HLDM034	P F
JC/70A	Mouse	2 ml Ready-to-use	HLA20009	P F
JC/70A	Mouse	6 ml Ready-to-use	HLA00009	P F



P=Formalin-fixed, paraffin-embedded  
F= Frozen sections

## Primary Antibodies

### CD34, Endothelial Cell

Clone	Host	Quantity	Cat #	Applications
QBEND-10	Mouse	1 ml Concentrate	HLDM098	P F
QBEND-10	Mouse	2 ml Ready-to-use	HLA20070	P F
QBEND-10	Mouse	6 ml Ready-to-use	HLA00070	P F

### CD4 (T Helper/Inducer)

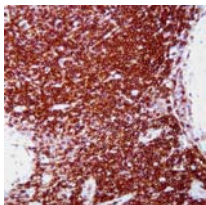
Clone	Host	Quantity	Cat #	Applications
1F6	Mouse	0.2 ml Concentrate	HL182282	P F
1F6	Mouse	6 ml Ready-to-use	HL081282	P F

### CD43, T-Cell

Clone	Host	Quantity	Cat #	Applications
MT-1	Mouse	0.5 ml Concentrate	HL187250	P F
DF-T1	Mouse	2 ml Ready-to-use	HLA20082	P F
DF-T1	Mouse	6 ml Ready-to-use	HLA00082	P F0

### CD45, Leucocyte Common Antigen (LCA)

Clone	Host	Quantity	Cat #	Applications
PD7/26/16 and 2B11	Mouse	1 ml Concentrate	HLDM040	P F
PD7/26 and 2B11	Mouse	2 ml Ready-to-use	HLA20017	P F
PD7/26 and 2B11	Mouse	6 ml Ready-to-use	HLA00017	P F



### CD45RO, T-Cell

Clone	Host	Quantity	Cat #	Applications
UCHL1	Mouse	1 ml Concentrate	HL180365	P F
UCHL1	Mouse	2 ml Ready-to-use	HLA20024	P F
UCHL1	Mouse	6 ml Ready-to-use	HLA00024	P F

### CD5 (Mantel Cell Lymphoma Marker)

Clone	Host	Quantity	Cat #	Applications
4C7	Mouse	1 ml Concentrate	HLDM138	P F
4C7	Mouse	2 ml Ready-to-use	HLA20090	P F
4C7	Mouse	6 ml Ready-to-use	HLA00090	P F

### CD56 (Small Cell Lung Cancer)

Clone	Host	Quantity	Cat #	Applications
123C3	Mouse	1 ml Concentrate	HL180152	P F
123C3	Mouse	6 ml Ready-to-use	HL081152	P F

## Primary Antibodies

### CD57 (NK Cells)

Clone	Host	Quantity	Cat #	Applications
NK-1	Mouse	1 ml Concentrate	HL180167	P F
NK-1	Mouse	6 ml Ready-to-use	HL080167	P F

### CD74

Clone	Host	Quantity	Cat #	Applications
LN2	Mouse	1 ml Concentrate	HL180163	P F
LN2	Mouse	2 ml Ready-to-use	HLA20048	P F
LN2	Mouse	6 ml Ready-to-use	HLA00048	P F

### CDw75

Clone	Host	Quantity	Cat #	Applications
LN1	Mouse	1 ml Concentrate	HL180164	P F
LN1	Mouse	2 ml Ready-to-use	HLA20047	P F
LN1	Mouse	6 ml Ready-to-use	HLA00047	P F

### CD8 (T Cytotoxic/Suppressor)

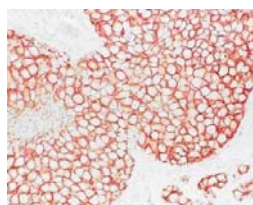
Clone	Host	Quantity	Cat #	Applications
1A5	Mouse	0.2 ml Concentrate	HL182289	P F
1A5	Mouse	6 ml Ready-to-use	HL081289	P F

### CD99 (Ewing's Sarcoma)

Clone	Host	Quantity	Cat #	Applications
013	Mouse	1 ml Concentrate	HL180235	P F
013	Mouse	6 ml Ready-to-use	HL081235	P F

### c-erbB-2 Oncoprotein

Clone	Host	Quantity	Cat #	Applications
CB11	Mouse	0.5 ml Concentrate	HL187107	P F
N/A	Rabbit	2 ml Ready-to-use	HLA20031	P F
N/A	Rabbit	6 ml Ready-to-use	HLA00031	P F



### c-erbB-3 Oncoprotein

Clone	Host	Quantity	Cat #	Applications
RTJ.1	Mouse	2 ml Ready-to-use	HLA20053	P F
RTJ.1	Mouse	6 ml Ready-to-use	HLA00053	P F

## Primary Antibodies

### Chromogranin A

Clone	Host	Quantity	Cat #	Applications
N/A	Rabbit	1 ml Concentrate	HL180094	P F
N/A	Rabbit	2 ml Ready-to-use	HLA20054	P F
N/A	Rabbit	6 ml Ready-to-use	HLA00054	P F
A3	Mouse	2 ml Ready-to-use	HLA20097	P F
A3	Mouse	6 ml Ready-to-use	HLA00097	P F

### Cyclin D1 (Bcl-1)

Clone	Host	Quantity	Cat #	Applications
AM29	Mouse	0.2 ml Concentrate	HL180220	P F
AM29	Mouse	6 ml Ready-to-use	HL081220	P F

### Cyclin D3

Clone	Host	Quantity	Cat #	Applications
DCS-22	Mouse	2 ml Ready-to-use	HLA20055	P F
DCS-22	Mouse	6 ml Ready-to-use	HLA00055	P F

### Cytokeratin 10

Clone	Host	Quantity	Cat #	Applications
Clone DE-K10	Mouse	1 ml Concentrate	HLDM055	P F
Clone DE-K10	Mouse	2 ml Ready-to-use	HLA20089	P F
Clone DE-K10	Mouse	6 ml Ready-to-use	HLA00089	P F

### Cytokeratin 19

Clone	Host	Quantity	Cat #	Applications
BA 17	Mouse	1 ml Concentrate	HLDM058	P F
BA 17	Mouse	2 ml Ready-to-use	HLA20094	P F
BA 17	Mouse	6 ml Ready-to-use	HLA00094	P F

### Cytokeratin 20

Clone	Host	Quantity	Cat #	Applications
Ks20.8	Mouse	0.2 ml Concentrate	HL182200	P F
Ks20.8	Mouse	6 ml Ready-to-use	HL081200	P F

### Cytokeratin 5/6

Clone	Host	Quantity	Cat #	Applications
D5/16B4	Mouse	1 ml Concentrate	HL180267	P F
D5/16B4	Mouse	6 ml Ready-to-use	HL081267	P F

### Cytokeratin 7

Clone	Host	Quantity	Cat #	Applications
OV-TL12/30	Mouse	1 ml Concentrate	HL180234	P F
OV-TL12/30	Mouse	6 ml Ready-to-use	HL081234	P F

## Primary Antibodies

### Cytokeratin 8, Low Molecular Weight

Clone	Host	Quantity	Cat #	Applications
C51	Mouse	1 ml Concentrate	HL180185	P F
35 $\beta$ H11	Mouse	2 ml Ready-to-use	HLA20072	P F
35 $\beta$ H11	Mouse	6 ml Ready-to-use	HLA00072	P F

### Cytokeratin 8/18

Clone	Host	Quantity	Cat #	Applications
Zym5.2	Mouse	1 ml Concentrate	HL180213	P F
Zym5.2	Mouse	6 ml Ready-to-use	HL081213	P F

### Cytokeratin AE1 (Acidic)

Clone	Host	Quantity	Cat #	Applications
AE1	Mouse	1 ml Concentrate	HL180153	P F
AE1	Mouse	2 ml Ready-to-use	HLA20051	P F
AE1	Mouse	6 ml Ready-to-use	HLA00051	P F

### Cytokeratin AE3 (Basic)

Clone	Host	Quantity	Cat #	Applications
AE3	Mouse	1 ml Concentrate	HL180154	P F
AE3	Mouse	2 ml Ready-to-use	HLA20052	P F
AE3	Mouse	6 ml Ready-to-use	HLA00052	P F

### Cytokeratin AE1/AE3 (Pan)

Clone	Host	Quantity	Cat #	Applications
AE1/AE3	Mouse	1 ml Concentrate	HL180132	P F
AE1/AE3	Mouse	6 ml Ready-to-use	HL081132	P F

### Cytokeratin, High Molecular Weight

Clone	Host	Quantity	Cat #	Applications
34 $\beta$ E12	Mouse	1 ml Concentrate	HLDM059	P F
34 $\beta$ E12	Mouse	2 ml Ready-to-use	HLA20071	P F
34 $\beta$ E12	Mouse	6 ml Ready-to-use	HLA00071	P F

### Cytokeratin (Pan)

Clone	Host	Quantity	Cat #	Applications
MNF116	Mouse	1 ml Concentrate	HLDM052	P F
MNF116	Mouse	2 ml Ready-to-use	HLA20096	P F
MNF116	Mouse	6 ml Ready-to-use	HLA00096	P F

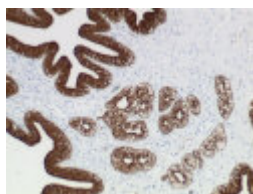
### Cytokeratin (Pan)

Clone	Host	Quantity	Cat #	Applications
5d3 & LP34	Mouse	2 ml Ready-to-use	HLA20029	P F
5d3 & LP34	Mouse	6 ml Ready-to-use	HLA00029	P F

## Primary Antibodies

### Cytokeratin, Wide M.W. Range

Clone	Host	Quantity	Cat #	Applications
ST1	Mouse	2 ml Ready-to-use	HLA20075	P F
ST1	Mouse	6 ml Ready-to-use	HLA00075	P F



### Cytomegalovirus (CMV)

Clone	Host	Quantity	Cat #	Applications
DDG9/CCH2	Mouse	6 ml Ready-to-use	HL080131	P F

### Desmin

Clone	Host	Quantity	Cat #	Applications
D33	Mouse	1 ml Concentrate	HLDM060	P F
D33	Mouse	2 ml Ready-to-use	HLA20007	P F
D33	Mouse	6 ml Ready-to-use	HLA00007	P F

### Epidermal Growth Factor

Clone	Host	Quantity	Cat #	Applications
31G7	Mouse	2 ml Concentrate	HL280005	P F
31G7	Mouse	6 ml Ready-to-use	HL081205	P F

### Epithelial Membrane Antigen

Clone	Host	Quantity	Cat #	Applications
E29	Mouse	1 ml Concentrate	HLDM063	P F
E29	Mouse	2 ml Ready-to-use	HLA20008	P F
E29	Mouse	6 ml Ready-to-use	HLA00008	P F

### Estrogen Receptor

Clone	Host	Quantity	Cat #	Applications
1D5	Mouse	1 ml Concentrate	HL180149	P F
1D5	Mouse	2 ml Ready-to-use	HLA20010	P F
1D5	Mouse	6 ml Ready-to-use	HLA00010	P F
CC4-5	Mouse	2 ml Ready-to-use	HLA20056	P F
CC4-5	Mouse	6 ml Ready-to-use	HLA00056	P F

### Factor VIII Related Antigen

Clone	Host	Quantity	Cat #	Applications
N/A	Rabbit	1 ml Concentrate	HL180018	P F
N/A	Rabbit	2 ml Ready-to-use	HLA20059	P F
N/A	Rabbit	6 ml Ready-to-use	HLA00059	P F
F8/86	Mouse	2 ml Ready-to-use	HLA20012	P F
F8/86	Mouse	6 ml Ready-to-use	HLA00012	P F

P=Formalin-fixed, paraffin-embedded  
F= Frozen sections

## Primary Antibodies

### Galactocerebroside A

Clone	Host	Quantity	Cat #	Applications
mGalC	Mouse	2 ml Ready-to-use	HLA20092	P F
mGalC	Mouse	6 ml Ready-to-use	HLA00092	P F

### GCDFP-15

Clone	Host	Quantity	Cat #	Applications
D6	Mouse	0.5 ml Concentrate	HL187284	P F

### GFAP

Clone	Host	Quantity	Cat #	Applications
N/A	Rabbit	1 ml Concentrate	HL180063	P F
6F2	Mouse	2 ml Ready-to-use	HLA20013	P F
6F2	Mouse	6 ml Ready-to-use	HLA00013	P F

### Hairy Cell Leukemia

Clone	Host	Quantity	Cat #	Applications
DBA.44	Mouse	1 ml Concentrate	HLDM200	P F
DBA.44	Mouse	2 ml Ready-to-use	HLA20015	P F
DBA.44	Mouse	6 ml Ready-to-use	HLA00015	P F

### HbcAg - Hepatitis B Core Antigen

Clone	Host	Quantity	Cat #	Applications
N/A	Rabbit	1 ml Concentrate	HL180022	P F
N/A	Rabbit	2 ml Ready-to-use	HLA20060	P F
N/A	Rabbit	6 ml Ready-to-use	HLA00060	P F

### HbsAg - Hepatitis B Surface Antigen

Clone	Host	Quantity	Cat #	Applications
N/A	Rabbit	1 ml Concentrate	HL180023	P F
N/A	Rabbit	6 ml Ready-to-use	HL080023	P F

### HCV

Clone	Host	Quantity	Cat #	Applications
TORDJI-22	Mouse	0.5 ml Concentrate	HL187252	P F

### IgA

Clone	Host	Quantity	Cat #	Applications
N/A	Rabbit	1 ml Concentrate	HLDR020	P F
N/A	Rabbit	2 ml Ready-to-use	HLA20061	P F
N/A	Rabbit	6 ml Ready-to-use	HLA00061	P F

## Primary Antibodies

### IgG

Clone	Host	Quantity	Cat #	Applications
N/A	Rabbit	1 ml Concentrate	HLDR023	P F
N/A	Rabbit	2 ml Ready-to-use	HLA20062	P F
N/A	Rabbit	6 ml Ready-to-use	HLA00062	P F

### IgM

Clone	Host	Quantity	Cat #	Applications
N/A	Rabbit	1 ml Concentrate	HLDR024	P F
N/A	Rabbit	2 ml Ready-to-use	HLA20063	P F
N/A	Rabbit	6 ml Ready-to-use	HLA00063	P F

### Kappa Light Chain

Clone	Host	Quantity	Cat #	Applications
HP6053	Mouse	1 ml Concentrate	HL180031	P F
N/A	Rabbit	2 ml Ready-to-use	HLA20064	P F
N/A	Rabbit	6 ml Ready-to-use	HLA00064	P F

### Ki-67 Antigen

Clone	Host	Quantity	Cat #	Applications
N/A	Rabbit	1 ml Concentrate	HL180191	P F
N/A	Rabbit	2 ml Ready-to-use	HLA20095	P F
N/A	Rabbit	6 ml Ready-to-use	HLA00095	P F

### c-Kit (CD117)

Clone	Host	Quantity	Cat #	Applications
N/A	Rabbit	1 ml Concentrate	HL180476	P F
N/A	Rabbit	6 ml Ready-to-use	HL081476	P F

### Lambda Light Chain

Clone	Host	Quantity	Cat #	Applications
HP6054	Mouse	1 ml Concentrate	HL180032	P F
N/A	Rabbit	2 ml Ready-to-use	HLA20065	P F
N/A	Rabbit	6 ml Ready-to-use	HLA00065	P F

### Laminin

Clone	Host	Quantity	Cat #	Applications
4C7	Mouse	1 ml Concentrate	HLDM202	P F
4C7	Mouse	2 ml Ready-to-use	HLA20079	P F
4C7	Mouse	6 ml Ready-to-use	HLA00079	P F

### Lymphatic Endothelial Marker

Clone	Host	Quantity	Cat #	Applications
D2-40	Mouse	0.2 ml Concentrate	HL182410	P F
D2-40	Mouse	6 ml Ready-to-use	HL081410	P F

P=Formalin-fixed, paraffin-embedded  
F= Frozen sections

## Primary Antibodies

### Lymphoma, Anaplastic Large Cell

Clone	Host	Quantity	Cat #	Applications
BNH9	Mouse	2 ml Ready-to-use	HLA20018	P F
BNH9	Mouse	6 ml Ready-to-use	HLA00018	P F

### Lysozime

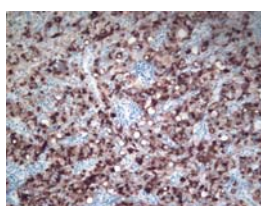
Clone	Host	Quantity	Cat #	Applications
N/A	Rabbit	1 ml Concentrate	HL180039	P F
N/A	Rabbit	2 ml Ready-to-use	HLA20033	P F
N/A	Rabbit	6 ml Ready-to-use	HLA00033	P F

### MART-1 (Melan-A)

Clone	Host	Quantity	Cat #	Applications
A103	Mouse	0.5 ml Concentrate	HL187259	P F

### Melanoma

Clone	Host	Quantity	Cat #	Applications
HMB45	Mouse	0.2 ml Concentrate	HL182050	P F
HMB45	Mouse	2 ml Ready-to-use	HLA20019	P F
HMB45	Mouse	6 ml Ready-to-use	HLA00019	P F



### MIC2 Gene Protein, CD99

Clone	Host	Quantity	Cat #	Applications
013	Mouse	1 ml Concentrate	HL180235	P F
HO36-1.1	Mouse	2 ml Ready-to-use	HLA20044	P F
HO36-1.1	Mouse	6 ml Ready-to-use	HLA00044	P F

### MLH1

Clone	Host	Quantity	Cat #	Applications
14	Mouse	0.2 ml Concentrate	HL182342	P F
14	Mouse	6 ml Ready-to-use	HL081342	P F

### MSH2

Clone	Host	Quantity	Cat #	Applications
FE11	Mouse	0.2 ml Concentrate	HL182343	P F
FE11	Mouse	6 ml Ready-to-use	HL081343	P F

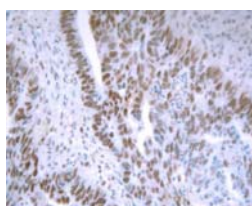
## Primary Antibodies

### MSH3

Clone	Host	Quantity	Cat #	Applications
52	Mouse	6 ml Ready-to-use	HL081429	P F

### MSH6

Clone	Host	Quantity	Cat #	Applications
2D4B5	Mouse	1 ml Concentrate	HL180443	P F
2D4B5	Mouse	6 ml Ready-to-use	HL081443	P F



### Myelin Basic Protein

Clone	Host	Quantity	Cat #	Applications
N/A	Rabbit	1 ml Concentrate	HL180444	P F
N/A	Rabbit	6 ml Ready-to-use	HL081444	P F

### Myeloperoxidase (MPO)

Clone	Host	Quantity	Cat #	Applications
N/A	Rabbit	1 ml Concentrate	HLDR053	P F
N/A	Rabbit	6 ml Ready-to-use	HL081285	P F

### Myoglobin

Clone	Host	Quantity	Cat #	Applications
N/A	Rabbit	1 ml Concentrate	HLDR029	P F
N/A	Rabbit	2 ml Ready-to-use	HLA20066	P F
N/A	Rabbit	6 ml Ready-to-use	HLA00066	P F

### Myosin (Skeletal Muscle)

Clone	Host	Quantity	Cat #	Applications
N/A	Rabbit	1 ml Concentrate	HL180074	P F

### Neurofilaments

Clone	Host	Quantity	Cat #	Applications
2F11	Mouse	1 ml Concentrate	HLDM080	P F
2F11	Mouse	2 ml Ready-to-use	HLA20020	P F
2F11	Mouse	6 ml Ready-to-use	HLA00020	P F

### NFkB (p65)

Clone	Host	Quantity	Cat #	Applications
N/A	Rabbit	0.5 ml Concentrate	HL187308	P F

## Primary Antibodies

### nm23 (NDPK-A Protein)

Clone	Host	Quantity	Cat #	Applications
37.6	Mouse	2 ml Ready-to-use	HLA20043	P F
37.6	Mouse	6 ml Ready-to-use	HLA00043	P F

### Oct2

Clone	Host	Quantity	Cat #	Applications
ZO001	Mouse	1 ml Concentrate	HL180471	P F
ZO001	Mouse	6 ml Ready-to-use	HL081471	P F

### p53

Clone	Host	Quantity	Cat #	Applications
BP53-12	Mouse	1 ml Concentrate	HL180129	P F
BP53-12	Mouse	2 ml Ready-to-use	HLA20026	P F
BP53-12	Mouse	6 ml Ready-to-use	HLA00026	P F
DO-7	Mouse	0.5 ml Concentrate	HL187251	P F
DO-7	Mouse	2 ml Ready-to-use	HLA20021	P F
DO-7	Mouse	6 ml Ready-to-use	HLA00021	P F
Pab 1801	Mouse	2 ml Ready-to-use	HLA20028	P F
Pab 1801	Mouse	6 ml Ready-to-use	HLA00028	P F

### p63

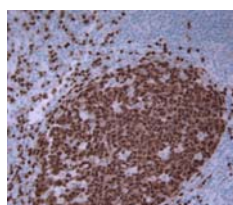
Clone	Host	Quantity	Cat #	Applications
4B1E12	Mouse	1 ml Concentrate	HL180414	P F
4B1E12	Mouse	6 ml Ready-to-use	HL081414	P F

### Papillomavirus (Pan-HPV)

Clone	Host	Quantity	Cat #	Applications
N/A	Rabbit	2 ml Ready-to-use	HLA20076	P F
N/A	Rabbit	6 ml Ready-to-use	HLA00076	P F

### Pax5

Clone	Host	Quantity	Cat #	Applications
ZP007	Mouse	1 ml Concentrate	HL180472	P F
ZP007	Mouse	6 ml Ready-to-use	HL081472	P F



### PCNA

Clone	Host	Quantity	Cat #	Applications
PC10	Mouse	1 ml Concentrate	HL180110	P F
PC10	Mouse	2 ml Ready-to-use	HLA20022	P F
PC10	Mouse	6 ml Ready-to-use	HLA00022	P F

P=Formalin-fixed, paraffin-embedded  
F= Frozen sections

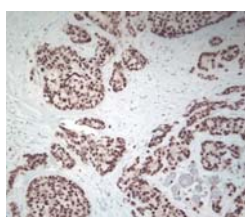
## Primary Antibodies

### Placental Alkaline Phosphatase (PLAP)

Clone	Host	Quantity	Cat #	Applications
N/A	Rabbit	1 ml Concentrate	HL180099	P F
N/A	Rabbit	6 ml Ready-to-use	HL081099	P F

### Progesterone Receptor

Clone	Host	Quantity	Cat #	Applications
PR-2C5	Mouse	1 ml Concentrate	HL180172	P F
1A6	Mouse	0.5 ml Concentrate	HLDM103	P F
1A6	Mouse	2 ml Ready-to-use	HLA20023	P F
1A6	Mouse	6 ml Ready-to-use	HLA00023	P F



### PSA (Prostate Specific Antigen)

Clone	Host	Quantity	Cat #	Applications
N/A	Rabbit	2 ml Ready-to-use	HLA20035	P F
N/A	Rabbit	6 ml Ready-to-use	HLA00035	P F
ER-PR8	Mouse	1 ml Concentrate	HLDM084	P F
ER-PR8	Mouse	2 ml Ready-to-use	HLA20068	P F
ER-PR8	Mouse	6 ml Ready-to-use	HLA00068	P F

### PSAP

Clone	Host	Quantity	Cat #	Applications
PASE/4LJ	Mouse	2 ml Ready-to-use	HLA20041	P F
PASE/4LJ	Mouse	6 ml Ready-to-use	HLA00041	P F

### S-100

Clone	Host	Quantity	Cat #	Applications
N/A	Rabbit	2 ml Ready-to-use	HLA20036	P F
N/A	Rabbit	6 ml Ready-to-use	HLA00036	P F
N/A	Rabbit	1 ml Concentrate	HL180046	P F
4C4.9	Mouse	2 ml Ready-to-use	HLA20087	P F
4C4.9	Mouse	6 ml Ready-to-use	HLA00087	P F

### T-Cell

Clone	Host	Quantity	Cat #	Applications
OPD4	Mouse	1 ml Concentrate	HLDM087	P F
OPD4	Mouse	2 ml Ready-to-use	HLA20025	P F
OPD4	Mouse	6 ml Ready-to-use	HLA00025	P F

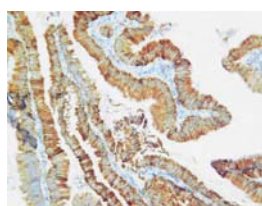
## Primary Antibodies

### TdT

Clone	Host	Quantity	Cat #	Applications
N/A	Rabbit	0.5 ml Concentrate	HL187237	P F
NPT26	Mouse	2 ml Ready-to-use	HLA20086	P F
NPT26	Mouse	6 ml Ready-to-use	HLA00086	P F

### Thymidylate Synthase

Clone	Host	Quantity	Cat #	Applications
TS106/4H4B1	Mouse	1 ml Concentrate	HL180405	P F
TS106/4H4B1	Mouse	6 ml Ready-to-use	HL081405	P F



### Thyroglobulin

Clone	Host	Quantity	Cat #	Applications
2H11/6E1	Mouse	1 ml Concentrate	HL180134	P F
2H11/6E1	Mouse	6 ml Ready-to-use	HL080134	P F

### Topoisomerase II

Clone	Host	Quantity	Cat #	Applications
3F6	Mouse	2 ml Ready-to-use	HLA20088	P F
3F6	Mouse	6 ml Ready-to-use	HLA00088	P F

### TTF-1

Clone	Host	Quantity	Cat #	Applications
8G7G3/1	Mouse	1 ml Concentrate	HL180221	P F
8G7G3/1	Mouse	6 ml Ready-to-use	HL081221	P F

### Ubiquitin

Clone	Host	Quantity	Cat #	Applications
N/A	Rabbit	2 ml Ready-to-use	HLA20038	P F
N/A	Rabbit	6 ml Ready-to-use	HLA00038	P F

### VEGF

Clone	Host	Quantity	Cat #	Applications
VG1	Mouse	0.5 ml Concentrate	HL187328	P F
N/A	Rabbit	1 ml Concentrate	HL180254	P F

## Primary Antibodies

### Vimentin

Clone	Host	Quantity	Cat #	Applications
N/A	Rabbit	2 ml Ready-to-use	HLA20039	P F
N/A	Rabbit	6 ml Ready-to-use	HLA00039	P F
V9	Mouse	1 ml Concentrate	HL180052	P F
V9	Mouse	2 ml Ready-to-use	HLA20045	P F
V9	Mouse	6 ml Ready-to-use	HLA00045	P F

### ZAP-70

Clone	Host	Quantity	Cat #	Applications
2F3.2	Mouse	1 ml Concentrate	HL180416	P F
2F3.2	Mouse	6 ml Ready-to-use	HL081416	P F

## Ancillaries

### Antibody Diluents

#### Normal Antibody Diluent (Phosphate Buffered)

Cat #	Quantity
HLABB125	125 ml
HLABB500	500 ml
HLABB999	1000 ml

#### Normal Antibody Diluent (Tris Buffered)

Cat #	Quantity
HLADT500	500 ml
HLADT999	1000 ml

### Buffers

#### Phosphate Buffered Saline (10x) pH 7.4

Cat #	Quantity
HLPBD500	500 ml
HLPBD999	1000 ml

#### Phosphate Buffered Saline (25x) pH 7.6

Cat #	Quantity
HLPBS500	500 ml
HLPBS999	1000 ml

#### Phosphate Buffered Saline + Tween 20 (10x) pH 7.4

Cat #	Quantity
HLPBE500	500 ml
HLPBE999	1000 ml

#### Phosphate Buffered Saline + Tween 20 (20x) pH 7.6

Cat #	Quantity
HLPBT500	500 ml
HLPBT999	1000 ml

#### Tris Buffered Saline (10x) pH 7.5

Cat #	Quantity
HLTBD500	500 ml
HLTBD999	1000 ml

## Ancillaries

### Tris Buffered Saline (25x) pH 7.4

Cat #	Quantity
HLTBS500	500 ml
HLTBS999	1000 ml

### Tris Buffered Saline + Tween 20 (10x) pH 7.5

Cat #	Quantity
HLTBE500	500 ml
HLTBE999	1000 ml

### Tris Buffered Saline + Tween 20 (20x) pH 7.4

Cat #	Quantity
HLTBT500	500 ml
HLTBT999	1000 ml

## Digestion Enzymes and Enhancers

### Citrate Buffer (10x) pH 6.0

Cat #	Quantity
HLCBB500	500 ml
HLCBB999	1000 ml

### Citrate Plus (10x) HIER Solution

Cat #	Quantity
HLCPL500	500 ml
HLCPL999	1000 ml

### EDTA - Saline Buffer (10X Concentrate); pH 8.0

Cat #	Quantity
HLETA500	500 ml
HLETA999	1000 ml

### Pepsin, Stabilized Solution

Cat #	Quantity
HLPSS060	60 ml
HLPSS125	125 ml

### Trypsin, Stabilized Solution

Cat #	Quantity
HLTSS155	155 ml
HLTSS310	310 ml

## Ancillaries

### Hydrophobic Pens

#### PAP Pen

Cat #	Quantity
LP0001	1 pen

#### PAP Pen-Mini

Cat #	Quantity
LP0002	1 pen

### Blocking Reagents

#### Biotin Blocking Kit for Image Analysis

Cat #	Quantity
HLBKK030	30 ml
HLBKK120	120 ml

#### Peroxide Block for Image Analysis

Cat #	Quantity
HLADA015	15 ml
HLADA500	500 ml
HLADA999	1000 ml

#### Pro-Block

Cat #	Quantity
HLPBK125	125 ml
HLPBKS500	500 ml
HLPBK999	1000 ml

## Ancillaries

### Mounting Media

#### Aqueous Mount

Cat #	Quantity
HLAMT030	30 ml
HLAMT060	60 ml
HLAMT500	500 ml

#### Aqueous Mount (Low Viscosity)

Cat #	Quantity
HLAML030	30 ml
HLAML060	60 ml
HLAML500	500 ml

#### FluoreGuard Mounting Medium

Cat #	Quantity
HLFMM030	30 ml
HLFMM060	60 ml
HLFMM500	500 ml

#### Permanent Mounting Media (Aqueous)

Cat #	Quantity
HLPMT030	30 ml

#### Pertex Mounting Media (Xylene-based)

Cat #	Quantity
R0081	6x500 ml

## Detection Kits and Chromogens

### Detection Kits

#### UltraTek Alk-Phos Anti-Polyvalent (Fast Red) Staining System

<b>Cat #</b>	<b>Quantity</b>
HLAMH080	70 slides
Contains:	
8 ml SuperBlock	
8 ml Anti-Polyvalent	
8 ml Alk-Phos	
8 Fast-Red Tablets	
8 x 5ml Naphthol Phosphate Buffer	

#### UltraTek Alk-Phos Anti-Polyvalent Staining System

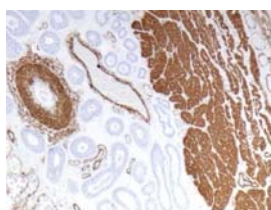
<b>Cat #</b>	<b>Quantity</b>
HLAFP600	500 slides
Contains:	
4x15 ml SuperBlock	
4x15 ml Anti-Polyvalent	
4x15 ml Alk-Phos	

#### UltraTek HRP Anti-Polyvalent (AEC) Staining System

<b>Cat #</b>	<b>Quantity</b>
HLAMG080	70 slides
Contains:	
8 ml SuperBlock	
8 ml Anti-Polyvalent	
8 ml HRP	
3 ml AEC Chromogen	
7 x 5ml AEC Substrate	

#### UltraTek HRP Anti-Polyvalent (DAB) Staining System

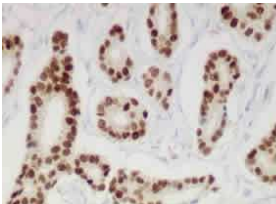
<b>Cat #</b>	<b>Quantity</b>
HLAMF080	70 slides
Contains:	
8 ml SuperBlock	
8 ml Anti-Polyvalent	
8 ml HRP	
3 ml DAB Chromogen	
7 x 5ml DAB Substrate	



## Detection Kits and Chromogens

### PolyTek HRP Anti-Mouse Polymerized Imaging System

Cat #	Quantity
HLPIR080	70 slides
Contains:	
125ml Citrate Plus	
8 ml Peroxide Block for Image Analysis	
8 ml SuperBlock	
8 ml PolyTek anti-Mouse HRP	
3 ml DAB Chromogen for Image Analysis	
8 x 5ml DAB Substrate for Image Analysis	
125ml Hematoxylin for Automation	
125ml Bluing Reagent	



### PolyTek HRP Anti-Rabbit Polymerized Imaging System

Cat #	Quantity
HLPIP080	70 slides
Contains:	
125ml Citrate Plus	
8 ml Peroxide Block for Image Analysis	
8 ml SuperBlock	
8 ml PolyTek anti-Mouse HRP	
3 ml DAB Chromogen for Image Analysis	
8 x 5ml DAB Substrate for Image Analysis	
125ml Hematoxylin for Automation	
125ml Bluing Reagent	

## Detection Kits and Chromogens

### Chromogens (HRP)

#### AEC Chromogen/Substrate Kit

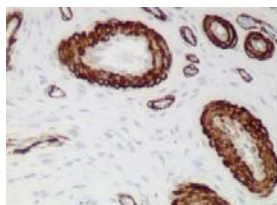
Cat #	Quantity
HLACG500	500 ml
Contains:	
55ml Substrate (5 x 11 vials)	
3ml AEC Chromogen	

#### DAB Chromogen/Substrate Kit

Cat #	Quantity
HLACH500	500 ml
Contains:	
55ml DAB Substrate (5 x 11 vials)	
3ml DAB Chromogen	

#### DAB Chromogen/Substrate Kit (High Contrast)

Cat #	Quantity
HLACT500	500 slides



#### DAB Enhancer Solution

Cat #	Quantity
HLACM030	30ml

#### DAB (Post) Enhancing Solution

Cat #	Quantity
HLDES500	500 ml
HLDES999	1000 ml

#### DAB One-Component Solution

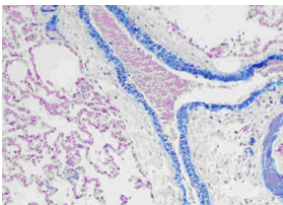
Cat #	Quantity
HLDBC015	15 ml
HLDBC125	125 ml
HLDBC999	1000 ml

## Detection Kits and Chromogens

### Chromogens (Alk-Phos)

#### Alk-Phos Blue Kit

Cat #	Quantity
HLAPB60	64 ml



#### BCP/INT Solution

Cat #	Quantity
HLACL125	125 ml
HLACL500	500 ml

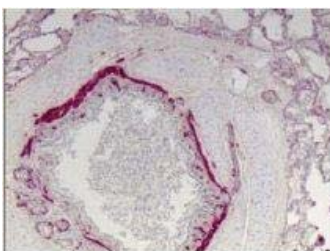
#### Fast-Red Substrate Pack

Cat #	Quantity
HLFR0001	1 kit

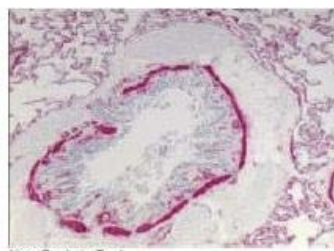
Contains:  
11 Fast-Red Tablets  
55ml Naphthol Phosphate  
Buffer (5 x 11)

#### New Fuchsin Kit

Cat #	Quantity
HLNF0001	60 ml
HLNF0002	400 ml



New Fuchsin Test  
No Ethanol  
Aqueous Mounting Media



New Fuchsin Test  
Dehydrated to Xylene  
Permanent Mounting Media

#### Permanent Red

Cat #	Quantity
HLPRD15	15 ml
HLPRD61	61 ml

# Histo-Line Laboratories



Via Brembo, 27 - Milano Italy  
Tel: +39 0255230061 Fax: +39 0255213764  
Email: [histoline@histoline.com](mailto:histoline@histoline.com)  
URL: [www.histo-online.com](http://www.histo-online.com)